



# **Economic Impact of Stroke Report 2024**

---

State Snapshot:  
Western Australia

# State Snapshot: Western Australia

## About the Economic Impact of Stroke Report

The Economic Impact of Stroke Report 2024 has estimated the health and economic impacts of stroke in Australia for the 2023 population. Our hope is that this report will inform conversations and evidenced-based decision-making about the allocation of resources to improve stroke prevention and treatment, and enhance recovery.

Stroke Foundation is proud to have partnered with Monash University to produce this report, and is grateful for the generous support of Boehringer Ingelheim, the Angels Initiative and Medtronic that enabled its development.

Whilst the report provides a national outlook, we have also produced a series of state and territory summaries.

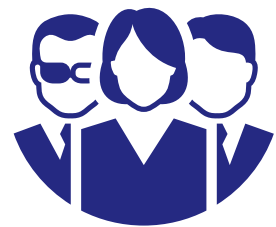
## For Western Australia in 2023



There were  
**45,316** residents living  
with stroke



There were  
**4,035** stroke events



**145 per 100,000**  
residents experienced a stroke  
(**176 per 100,000** in Australia)

## The estimated stroke risk in Western Australia



**529,900 (23%)**  
High blood pressure



**238,400 (10%)**  
Smoking



**281,200 (12%)**  
Physical inactivity



**1,498,700 (64%)**  
Overweight/obesity



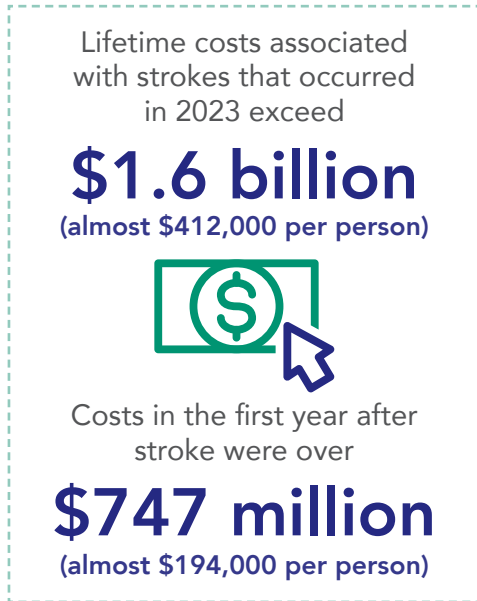
**237,100 (10%)**  
High cholesterol



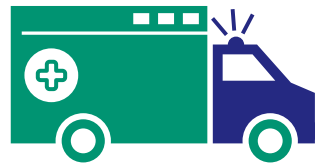
**149,200 (6%)**  
Diabetes

# Cost of stroke to the Western Australian economy

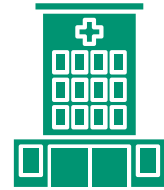
Economic modelling undertaken in the report estimates that for strokes that occurred in 2023, the economic impact on the Western Australian economy will be \$1.6 billion over a lifetime. This equates to \$412,000 per person. In the first year following stroke, the cost is \$747 million, which equates to \$194,000 per person.



**\$547 million**  
in healthcare costs for strokes occurring in 2023 including



**\$38 million**  
in road ambulance costs



**\$427 million**  
in hospital costs

## Cost savings from the implementation of initiatives to save lives and enhance recovery

### 30/60/90 National Stroke Targets

In 2023, national leaders in stroke agreed to bold new targets to ensure Australians have access to timely, world-leading stroke care. The 30/60/90 National Stroke Targets (the Targets) are a group of metrics designed to drive quality improvement activities in the areas of stroke unit access and time-critical endovascular stroke treatments.

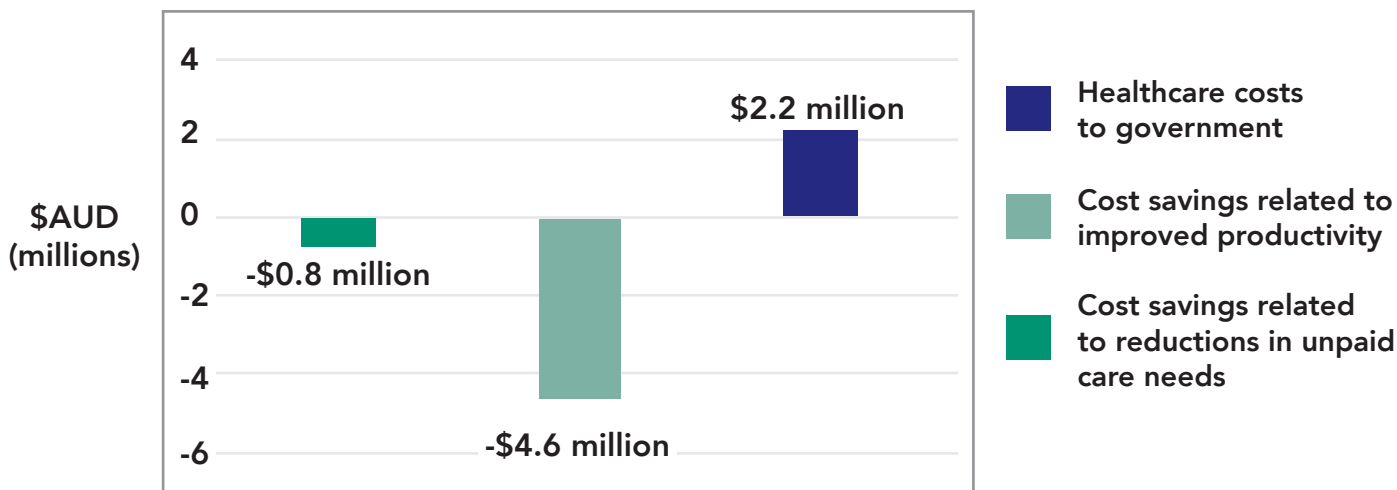
The improvements in outcomes, and cost savings, from Western Australia achieving the Targets, was modelled using current national rather than state performance measures, and are outlined below.

Target	Number of minutes saved	DALYs avoided
1. Median endovascular clot retrieval door to puncture time <30mins for transfers	1,400	16
2. Median thrombolysis door to needle time <60mins	3,887	19
3. Median door in door out time for endovascular clot retrieval <60mins	8,959	103
4. Median endovascular clot retrieval door to puncture time <90mins for primary presenters	4,194	48
5. Certified stroke unit care provided to >90% of patients with primary stroke diagnosis		205
<b>Total</b>	<b>18,440</b>	<b>392</b>

With achievement of the Targets, **392 disability-adjusted life years (DALYs) were estimated to be avoided.**

Almost **\$3.2 million in savings** were estimated over a lifetime after a stroke with the improvements in provision of acute care. There were increases in costs related to healthcare services (\$2.2 million), which were offset by \$5.4 million in savings from improved productivity and reduced informal care needs.

The economic impact of achieving the Targets in Western Australia is outlined below.



### Improved access to community rehabilitation

After a stroke, the aim of rehabilitation is to regain function and achieve the greatest possible level of independence. There are many different pathways to receiving rehabilitation following stroke that include inpatient and community-based services.

**In Western Australia, the cost savings over a lifetime associated with improving the provision of community-based rehabilitation for patients after stroke were estimated to be \$12.3 million.**



## \$12.3 million

in savings

by improving access to community rehabilitation services

To find out more and download the Economic Impact of Stroke Report, scan the QR code. If you have specific questions, please contact [advocacy@strokefoundation.org.au](mailto:advocacy@strokefoundation.org.au).

